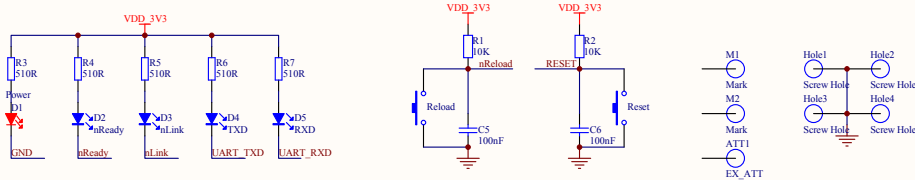
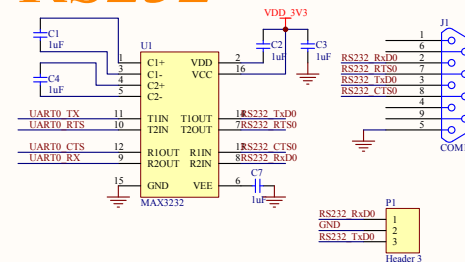


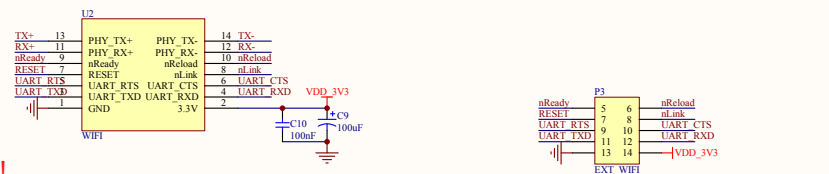
# KEY&LED



# RS232



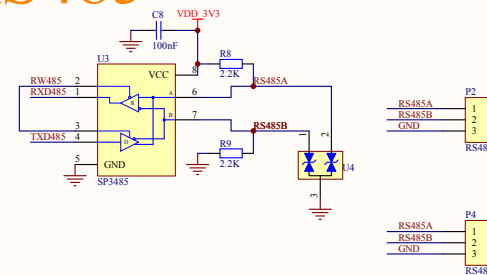
# WIFI



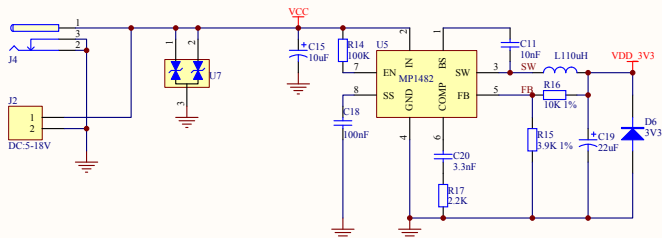
注意!!!

- 1, 模块供电电压必须严格小于其最大允许电压
- 2, 外部接口和模块接口直接连接时必须保证电平一致, 不一致需要做电平匹配

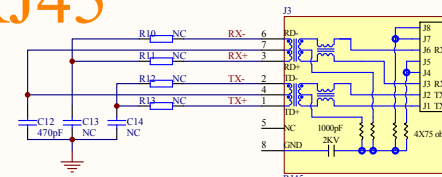
# RS485



# POWER



# RJ45



Title		
Size	Number	Revision
A3		
Date:	13-Dec-2018	Sheet of
File:	F:\01-WIFI03-B2\USR-WIFI232-2E\USH-WIFI03B2E V2.2.ddb	